



GSF-1 Installation Manual

Al-Khawarizmi Institute of Computer Science (KICS)
University of Engineering and Technology, Lahore





Contents

1	Welcome	3
2	Important warning	3
2.1	Electrical safety	3
2.2	Transportation security	3
2.3	Installation	3
2.4	Handling and examination	3
3	Introduction	4
4	Hardware	4
4.1	Indoor Unit	4
4.1.1	Front Panel	4
4.2	Outdoor Unit	5
4.1	Accessories	6
5	Installation and Connections	6
5.1	Check Unpacked GSF-1	6
5.2	Outdoor unit installation	6
5.3	Indoor unit installation	7
5.4	Connections	7
5.4.1	Connecting Microphone cable	7
5.4.2	Connecting Ethernet cable	8
5.4.3	Connecting the audio cable	8
5.4.4	Connecting power supply	9



Prepared By	Checked By	Version	Date
NWN Lab	Hammad Hassan	1.2	11/05/2019



1 Welcome

This user manual for non-commercial purpose. This manual will take you through how to use the whole system regarding the handling and installation of GSF-1 audio node product.

Kindly read it thoroughly before getting started with the system.

2 Important warning

2.1 Electrical safety

- All installation and operation here should conform to your local electrical safety codes.
- The product must be grounded to reduce the risk of electric shock.
- We assume no liability or responsibility for all the fires or electrical shock caused by improper handling or installation.

2.2 Transportation security

- Heavy stress, violent vibration or water splash are not allowed during transportation, storage and installation.

2.3 Installation

- Keep upwards. Handle with care.
- Do not apply power to the Indoor unit before completing installation.
- Do not place objects on the Indoor and Outdoor units.

2.4 Handling and examination

- All the examination / installation and repair work should be done by the qualified resource. We are not liable for any problems caused by unauthorized modifications or attempted repair.



- Keep away the Hardware from extreme hot places and sources;
- Keep away the indoor box from extreme humid places;
- Avoid violent vibration;
- Do not put other devices on the top of the indoor box;
- Be installed in well ventilated place; do not block the vent.
- Always use accessories recommend by the manufacturer



3 Introduction

This manual explains the components of GSF-1, related accessories and the installation of indoor and outdoor units.

4 Hardware

4.1 Indoor Unit

The indoor box is made of aluminum and has been arranged with removable front and back plates (refer to figure 1):

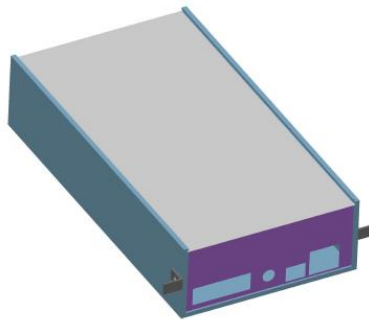


Figure 1: Indoor Aluminum Unit

4.1.1 Front Panel

The front plate for indoor Unit: shown in Figure 2. This contains the major connections of indoor unit. The labeling descriptions for connectors has been listed in Table 1,

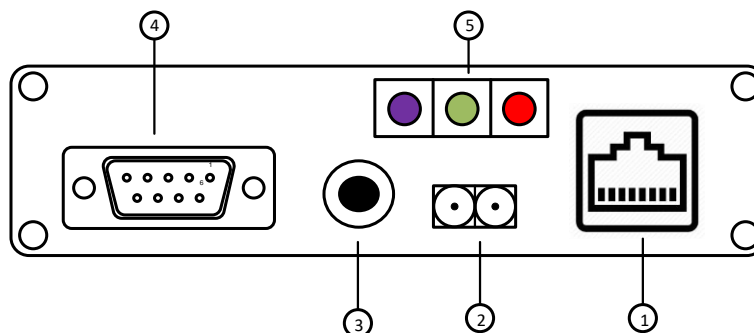


Figure 2: Front Plat of Indoor Unit



SNO	Name	Function
1	Ethernet Port	RJ45 10/100 Mbps Ethernet Port. Please Note only the Unit of Ethernet Module Supports this function.
2	Power jack	2 Pin Female Power connection port.
3	Microphone Jack	3-Pin 3.5mm Audio input jack.
4	DB-9 Male Port	9-Pin male header for microphone data input.
5	LED's	3 Status LED's for the performance indication.

Table 1: Front Plate Connections

4.2 Outdoor Unit

The outdoor contains three equidistance microphones arrangement: shown in Figure 3.

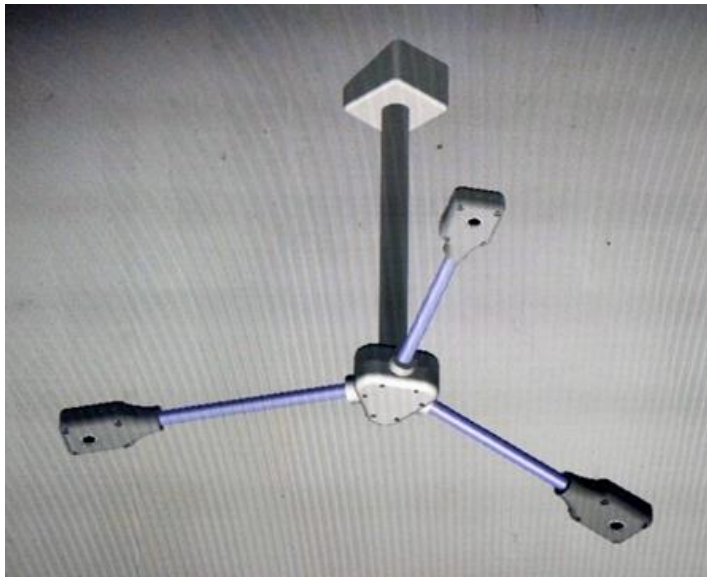


Figure 3: Outdoor unit



4.1 Accessories

The shipping items along with GSF-1 has been described in Table 2.

S. No	Item Name	Qty
1	Ethernet 10/100 Mbps Patch cord	1 x 1.5meter
2	3-Pin audio to audio cable	1x1.5 meter
3	2 core power cable	1x1.5 meter

Table 2: List of accessories

5 Installation and Connections

5.1 Check Unpacked GSF-1

When you receive the GSF-1, please check whether there is any visible damage. The protective materials used for the package of the GSF-1 can protect most accidental clashes during transportation. Then you can unpack to check the accessories as given in Table 2.

Please check the items in accordance with the list.

5.2 Outdoor unit installation

The outdoor unit was originally designed to be installed under the cabinet as described below in Figure 4. This Shipped IP65 compliance unit can be installed at any outdoor location with a wall / pole mount by following the procedure as described in Figure 4.

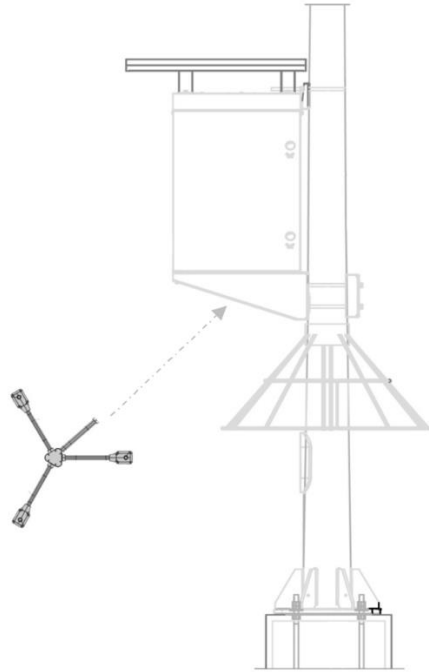


Figure 4: Outdoor Unit Installation

5.3 Indoor unit installation

The indoor unit is required to be placed at the allocated slot inside the distribution box installed at pole.

5.4 Connections

5.4.1 Connecting Microphone cable

The microphone data cable terminated with DB-9 connector should be connected as per connection layout given in the diagram (figure 5) below,

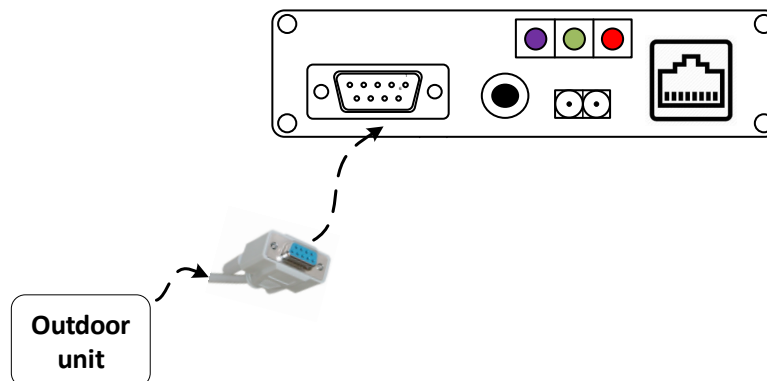


Figure 5: Microphone Cable Connection



5.4.2 Connecting Ethernet cable

The microphone Ethernet (RJ45) patch chord cable should be connected as per connection layout given in the diagram (figure 6) below,

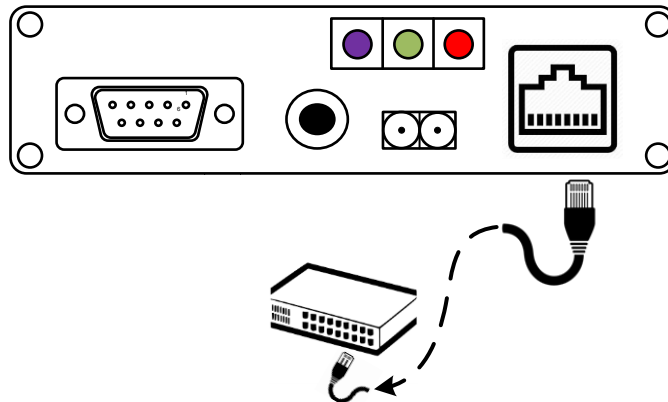


Figure 6: Ethernet Cable Connection

5.4.3 Connecting the audio cable

The 3-Pin audio cable patch chord cable should be connected as per connection layout given in the diagram (figure 7) below,

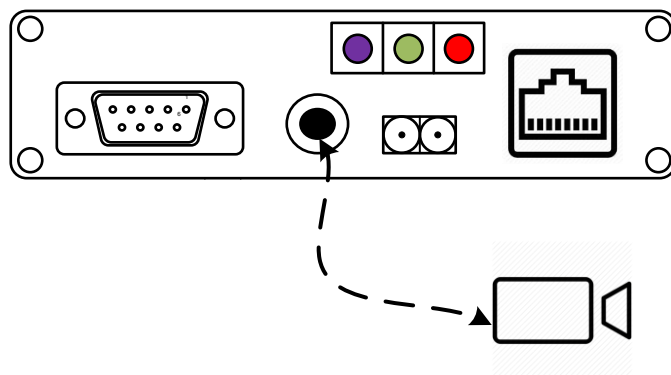


Figure 7: Audio cable Connection



5.4.4 Connecting power supply

The input DC-12V power supply should be connected in accordance with the labeling and polarity detail given in Figure 8 and Table 3,

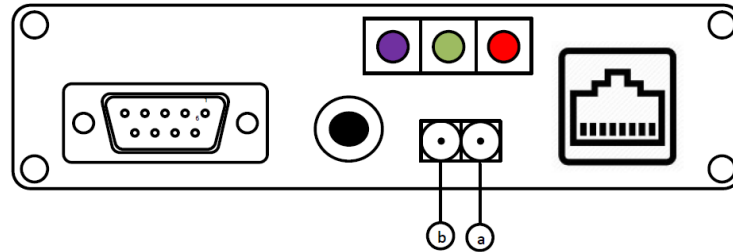


Figure 8: Power Cable Connections

S. No	Pin #	Polarity
1	a	+
2	b	-

Table 3: Power Connections